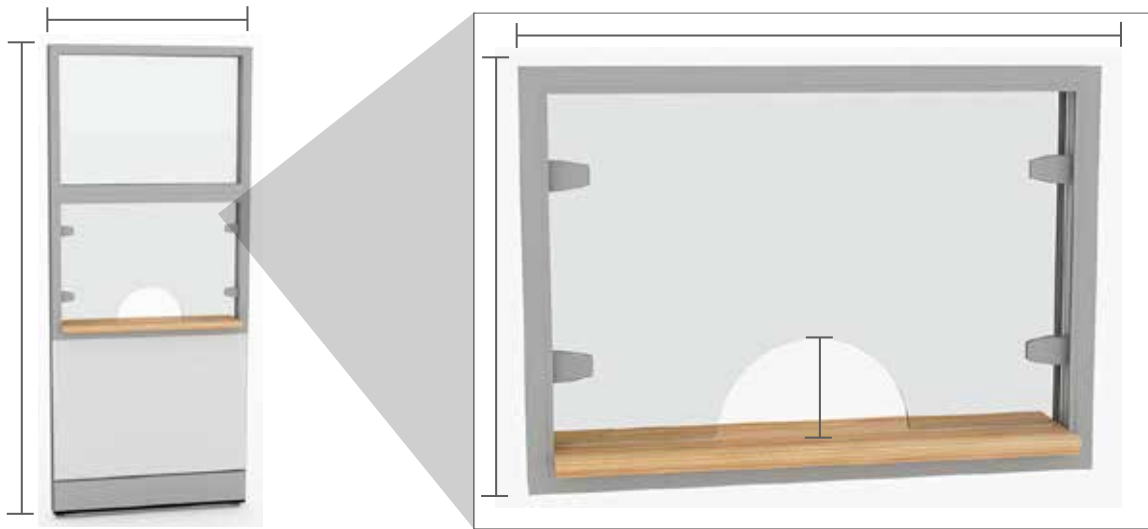


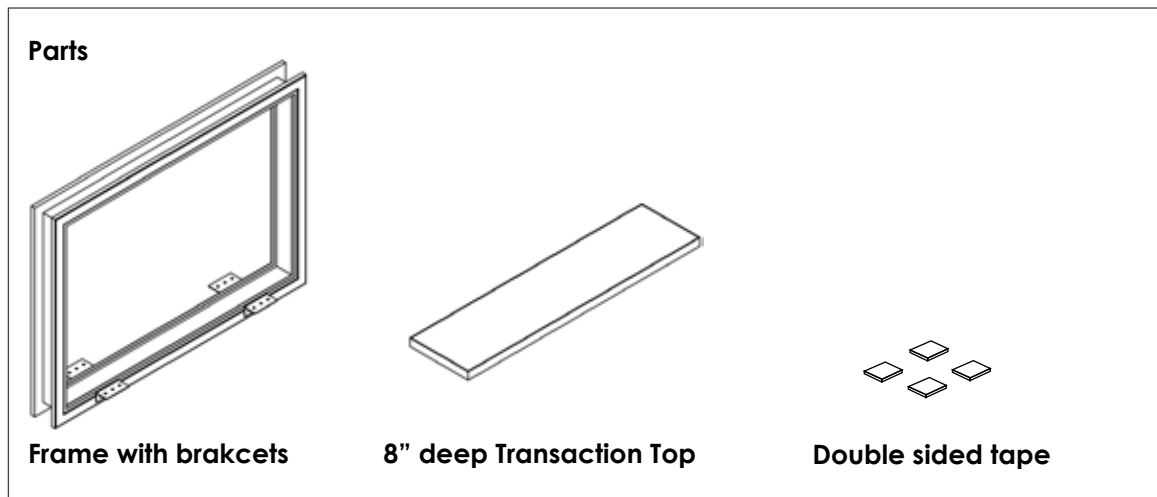
SAPPHIRE WALL SYSTEM

Transaction Window Installation

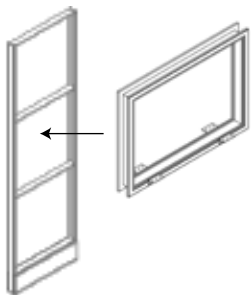


888-993-3757
skutchi.com

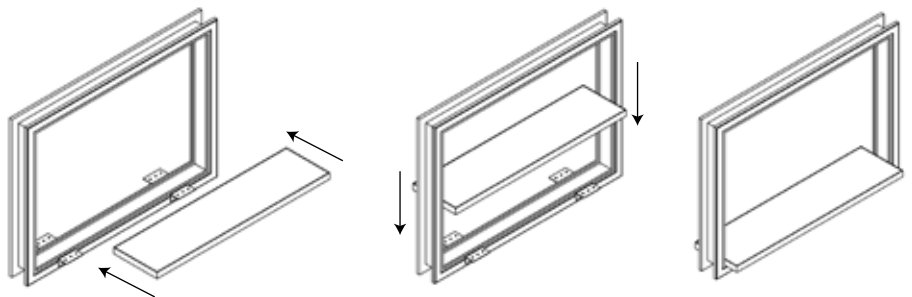
Open Window Installation



① Attach tile frame to panel



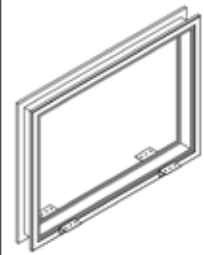
② Place transaction top on bottom of tile frame using double sided tape. Make sure top is centered.



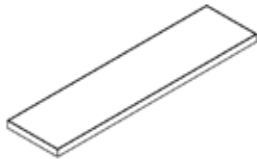
Sliding Window Install



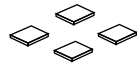
Parts



Frame with brackets



8" deep Transaction Top



Double sided tape



Clear Acrylic Sliding Doors

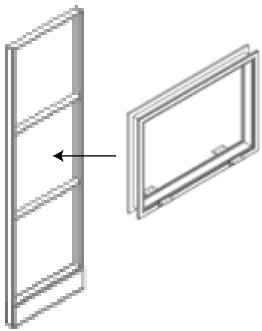


Sliding Window Track (Top & Bottom)

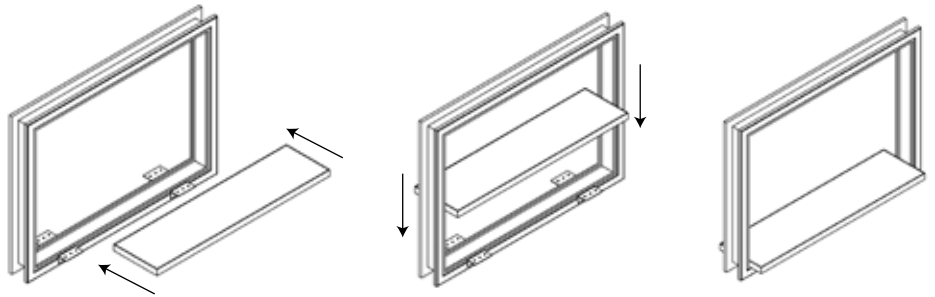


Small Screws

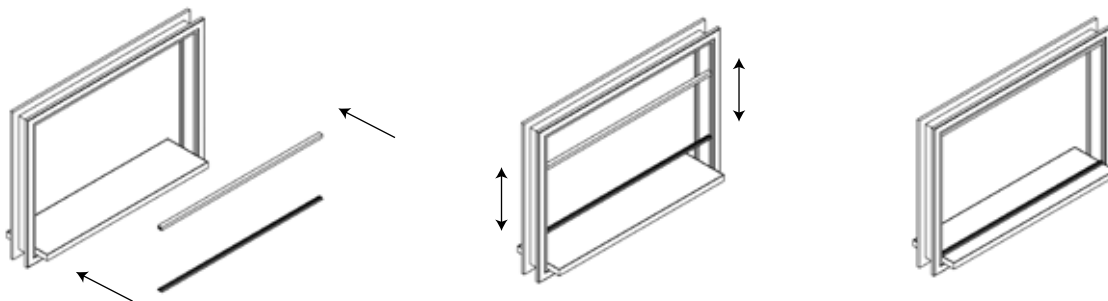
1 Attach tile frame to panel



2 Place transaction top on bottom of tile frame using double sided tape. Make sure top is centered.

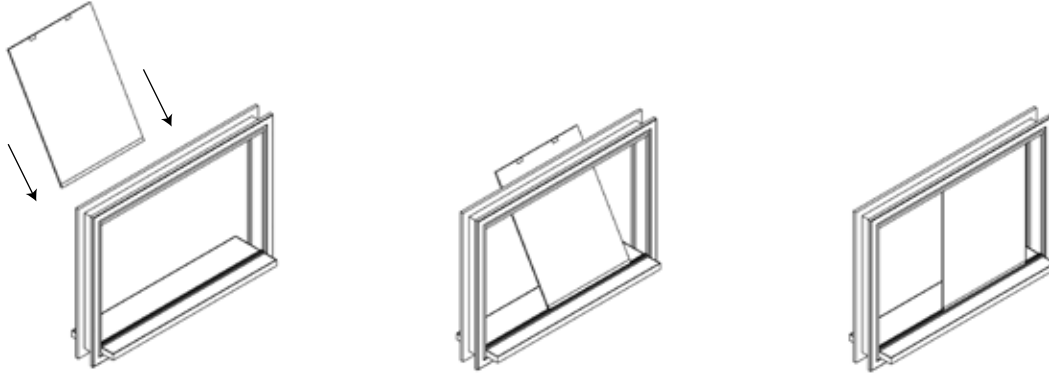


3 Using the small screws attach sliding window track (top & bottom) to tile frame (top) & transaction top (bottom). Line tracks where the acrylic doors will be flushed with the public side of the window.

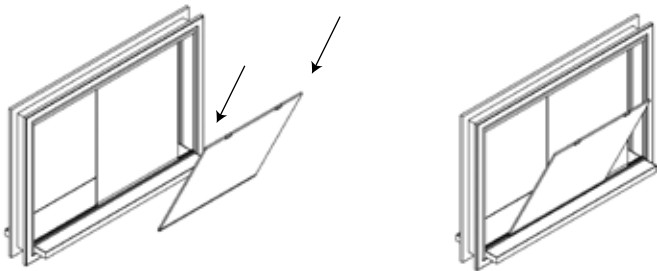


4 Install clear acrylic sliding screens by tilting the screens. Place bottom end into bottom track, then top on respected sides.

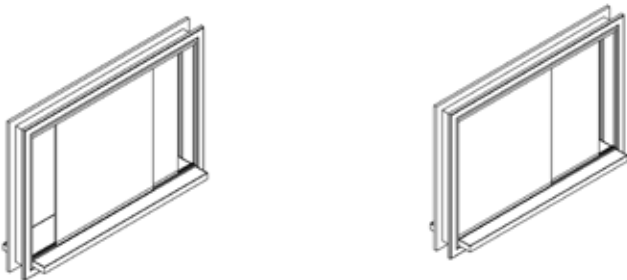
*Inserting first screen



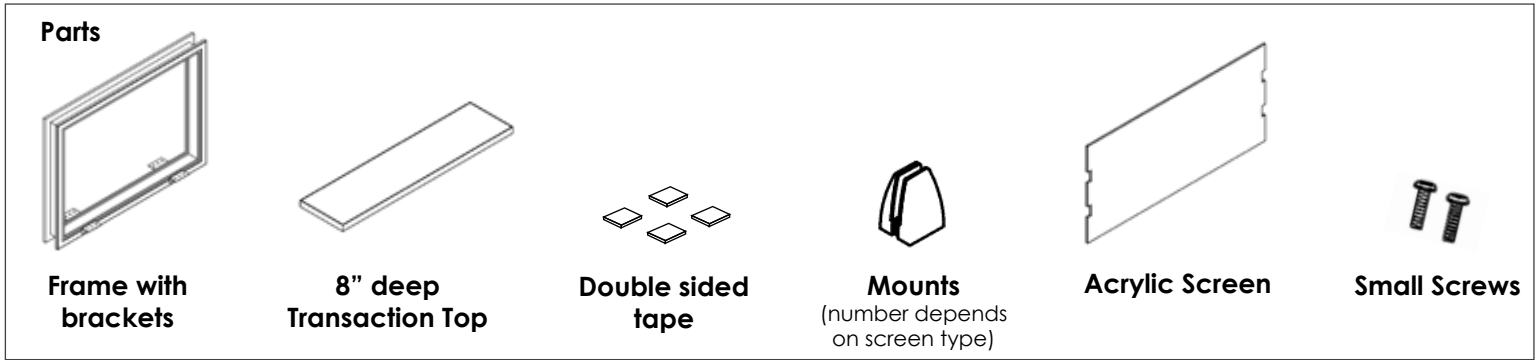
*Inserting second screen



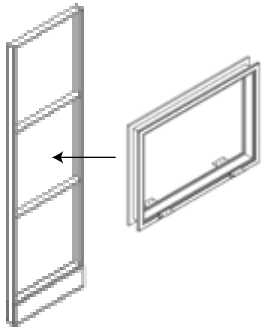
*Finished Window



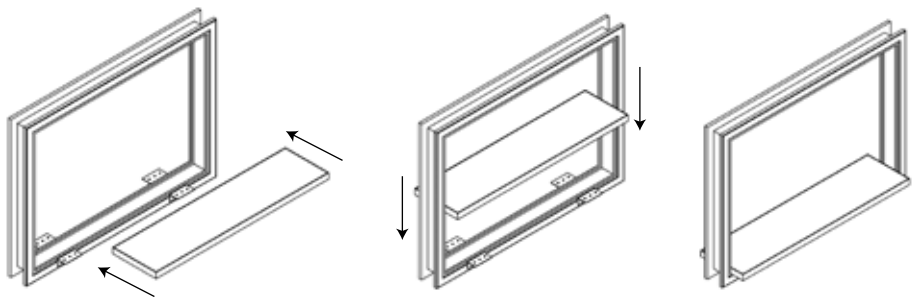
Acrylic Window Install



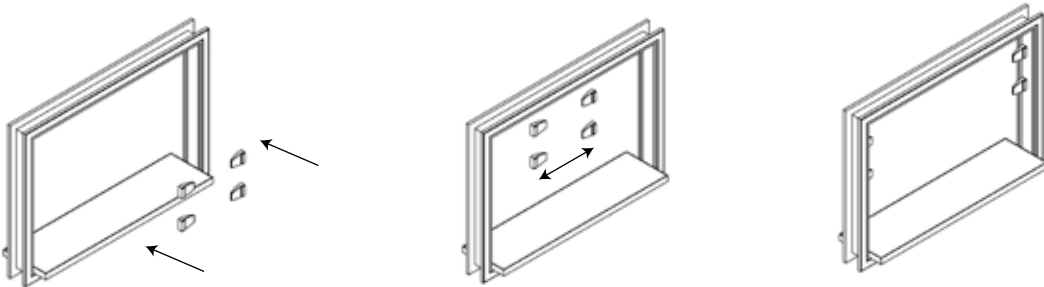
1 Attach tile frame to panel



2 Place transaction top on bottom of glass tile using double sided tape. Make sure top is centered.



3 Using acrylic as a guide, center mounts on frame and attach one side of mount with small screws. Place plastic pieces on inner part of the mounts.



4 Place the acrylic screen in the tile frame lining up notches with mounts. Place plastic washers in other part of the mounts not yet attached. Then connect to the other part of the mount already attached to the frame. Secure with hex bolt.

