



Sal
Office Furniture
COLLECTION

BOOKCASES
Features

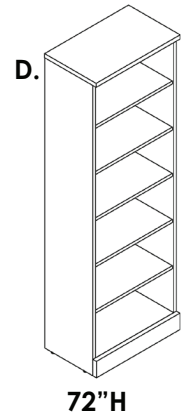
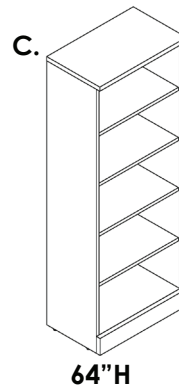
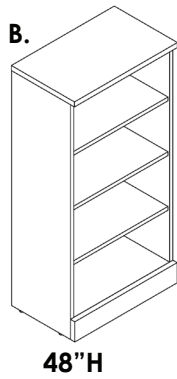
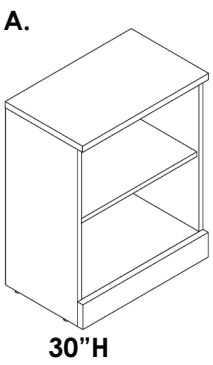
888-993-3757



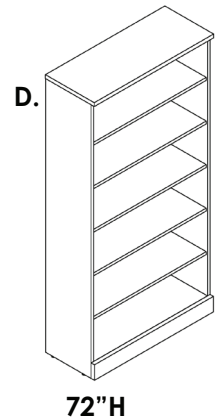
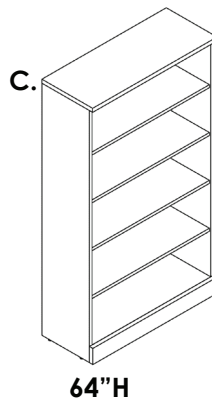
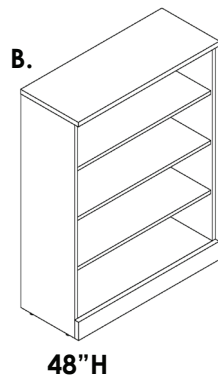
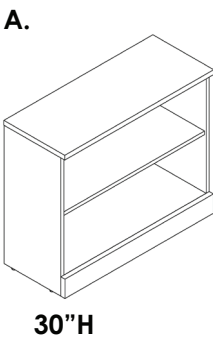


Bookcase Options

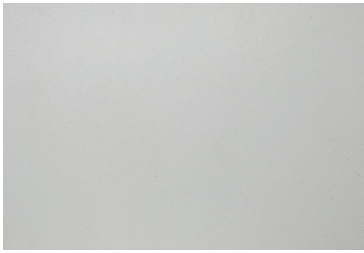
24"W



36"W



Laminate Options



Light Gray
(XD-01)



Domestic Laminate Options

*USA Made

Grade 2



White Cypress
(WA-7976)



Asian Night
(WA7949)



Linen
(D-427-60)

Grade 3



Black Cypress
(U999-ST19)



Features



Metal Shelf supports

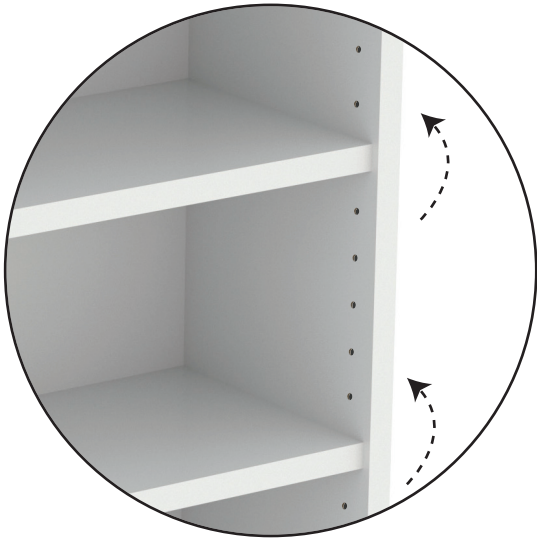


Spacious bookcase top with overhang



Backplane

Adjustable Shelves



Shelves are adjustable
to every 0.5 in

Please note:

All shelves are adjustable except those highlighted in red. The shelves in red do not adjust.

