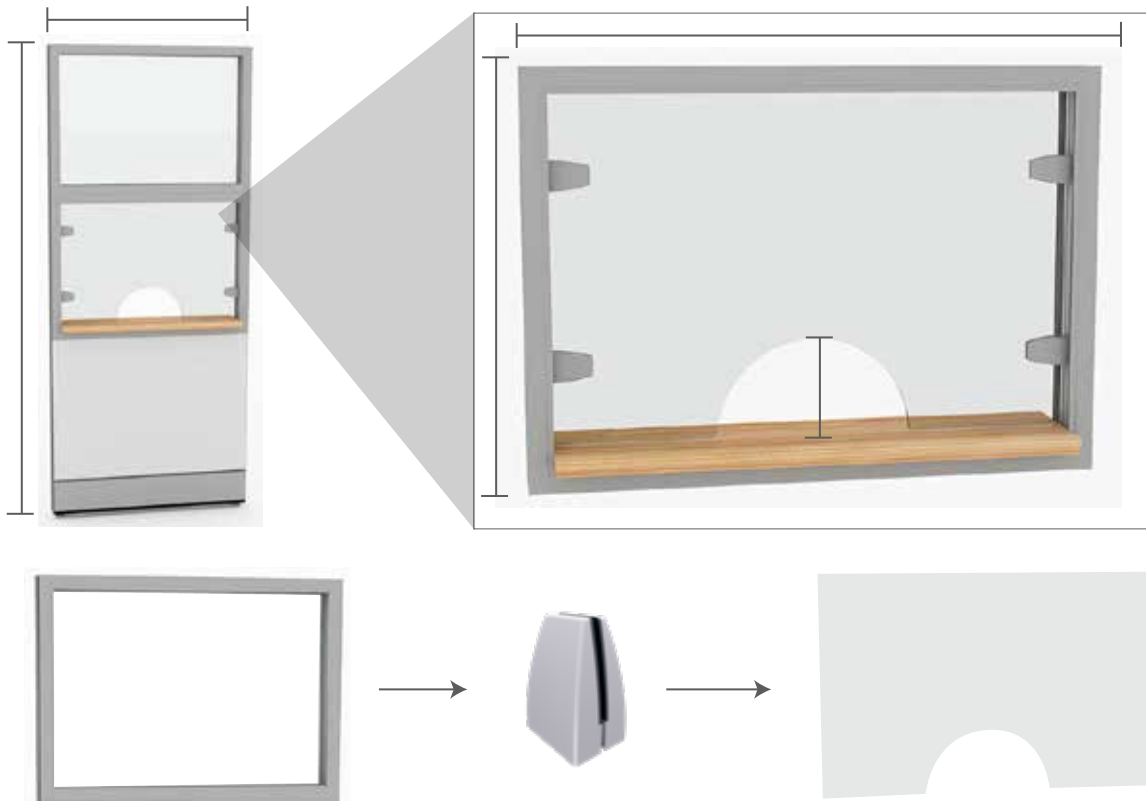


# SAPPHIRE WALL SYSTEM

## Transaction Window Installation

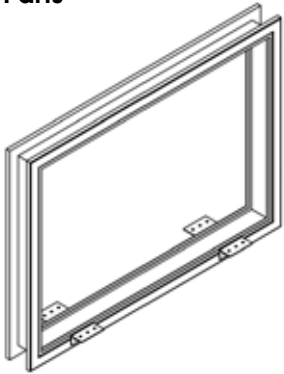


888-993-3757  
skutchi.com

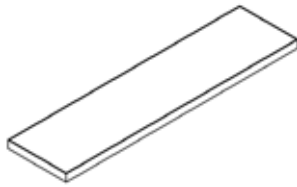
## Open Window Installation



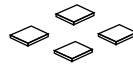
### Parts



Frame with brackets

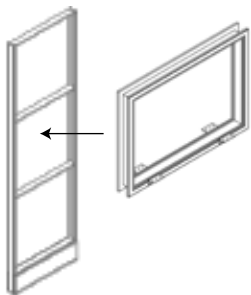


8" deep Transaction Top

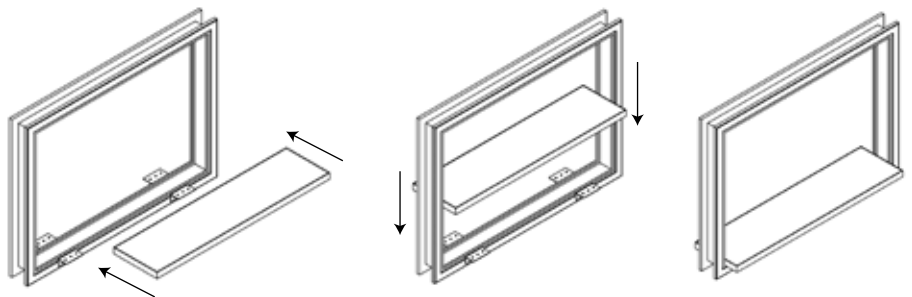


Double sided tape

① Attach tile frame to panel



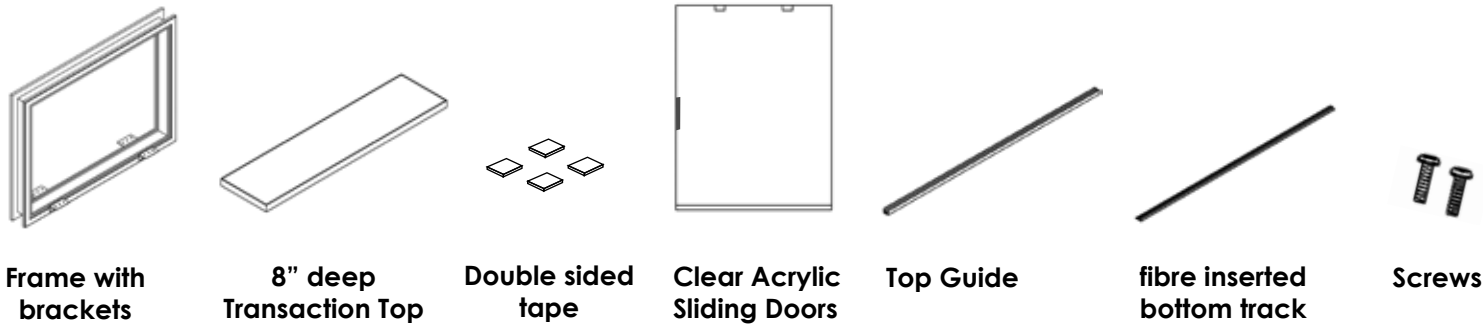
② Place transaction top on bottom of tile frame using double sided tape. Make sure top is centered.



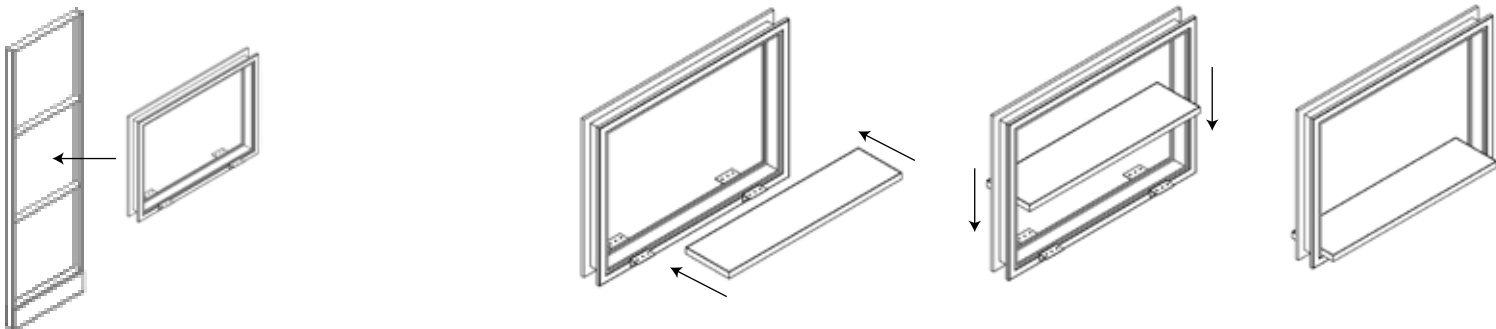
# Sliding Window Install



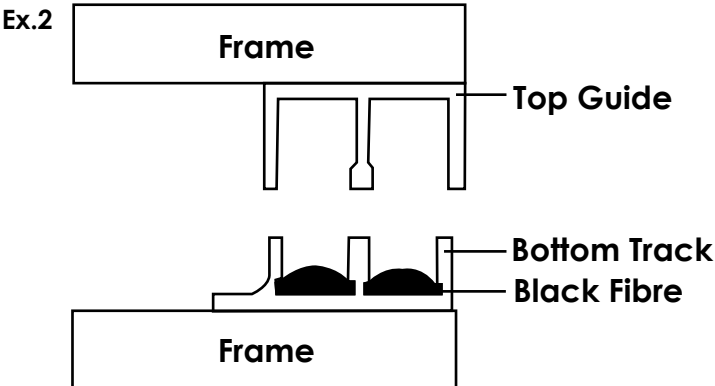
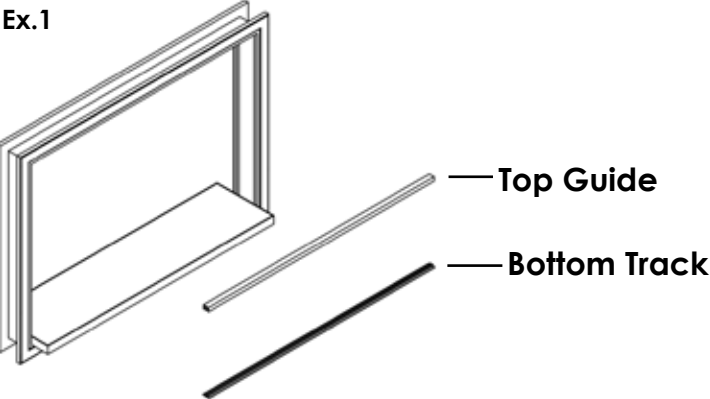
## Parts



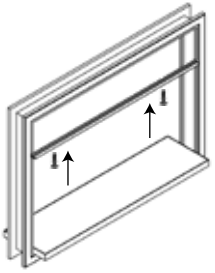
- 1 Attach tile frame to panel
- 2 Place transaction top on bottom of tile frame using double sided tape. Make sure top is centered.



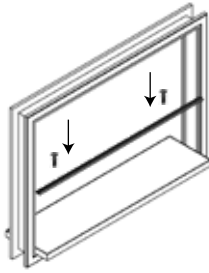
## Attaching Top Guide and Bottom Track



- 3** Using the small screws, first attach the top guide to tile frame by screwing up into the frame. Next **loosely** attach the bottom track (track with black fibre) to the transaction top by screwing down into the transaction top. Leave this loose until acrylic doors are inserted. Line tracks where the acrylic doors will be flushed with the public side of the window.



**\*Be sure to attach the top guide first.**



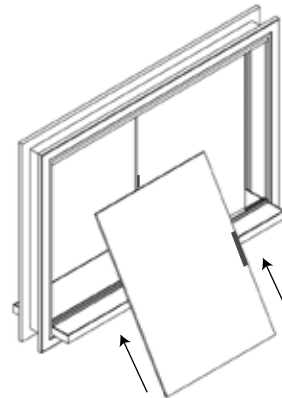
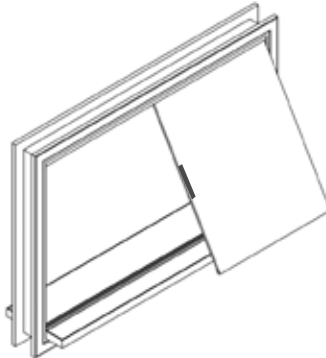
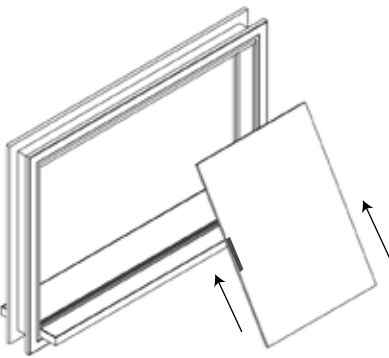
**\*Leave bottom track loose so acrylic doors can be inserted.**



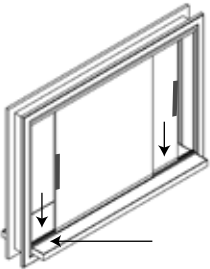
- 4** Install clear acrylic sliding screens by tilting then inserting into tracks. Place top end into top guide, then bottom on respected sides.

\*Inserting first screen

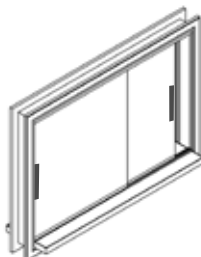
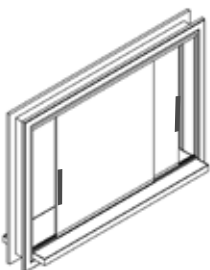
\*Inserting second screen



- 5** Be sure to tighten down bottom track once screens are inserted.



\*Finished Window



# Acrylic Window Install



Slab



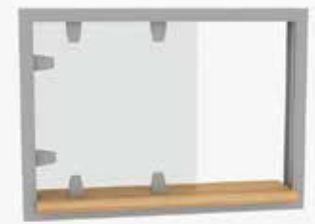
Pass through



Speaker

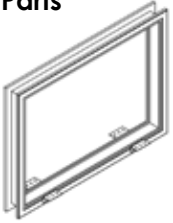


Teller

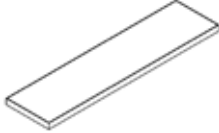


Package

## Parts



Frame with brackets



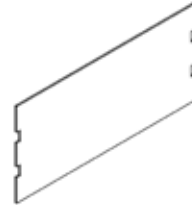
8" deep Transaction Top



Double sided tape



Mounts  
(number depends on screen type)

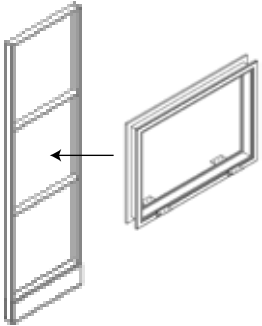


Acrylic Screen

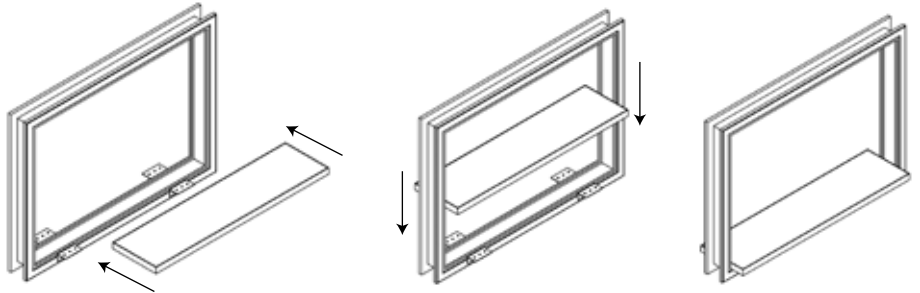


Small Screws

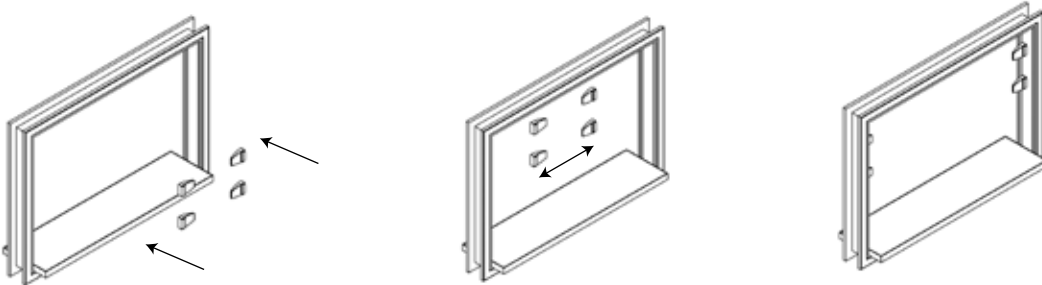
- 1 Attach tile frame to panel



- 2 Place transaction top on bottom of glass tile using double sided tape. Make sure top is centered.



- 3 Using acrylic as a guide, center mounts on frame and attach one side of mount with small screws. Place plastic pieces on inner part of the mounts.



- 4 Place the acrylic screen in the tile frame lining up notches with mounts. Place plastic washers in other part of the mounts not yet attached. Then connect to the other part of the mount already attached to the frame. Secure with hex bolt.

